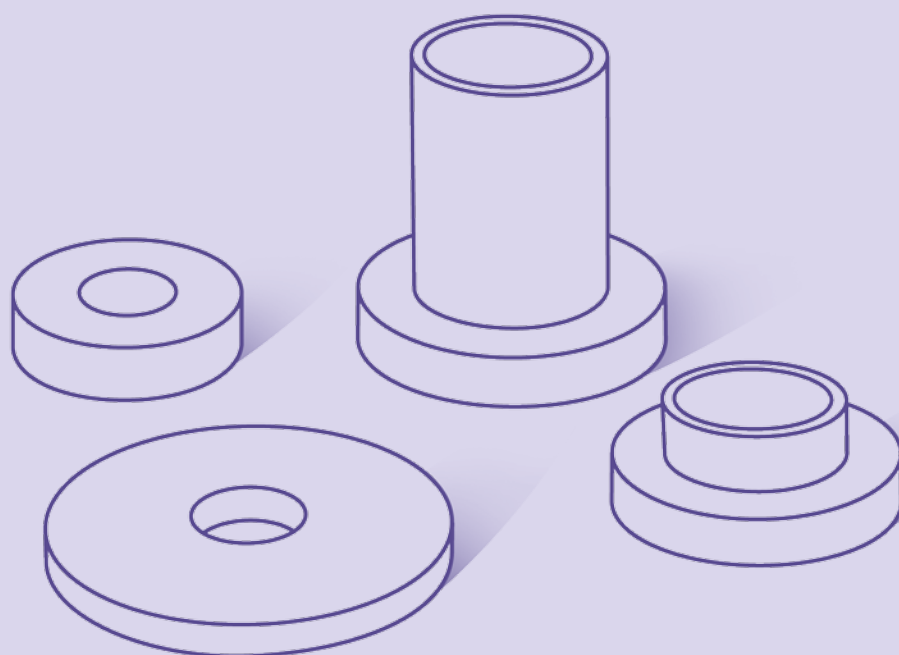


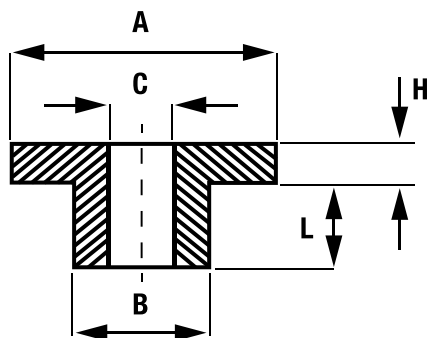
BOCCOLE - RONDELLE

EARS-RING - WASHERS



MATERIALE | MATERIAL: Nylon 66 - PVC - PE - Polistirolo | PA 66 - PVC - PE - Polystyrene**COLORI STANDARD | STANDARD COLOURS:** Naturale - Nero - Bianco | Natural - Black - White

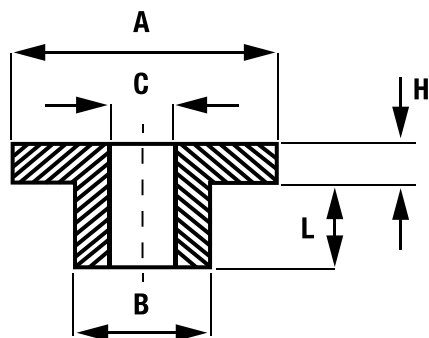
DETTAGLI | DETAILS



P/N	DIMENSIONI Sizes				
	A	B	C	H	L
00735.21.10	10,5	2,3	1,4	2,5	7,0
02822.21.10	6,4	3,6	2,9	1,2	1,2
02823.21.10	6,4	3,6	2,9	1,2	2,3
02824.21.10	6,4	3,6	2,9	1,2	4,0
00749.21.10	13,8	5,0	3,3	2,5	7,0
02829.21.20	9,0	6,0	5,0	2,0	5,0
04761.21.10	11,7	6,2	4,2	2,9	12,4
03065.21.02	9,2	6,4	4,1	1,25	1,25
03993.21.11	11,0	6,8	4,1	2,0	8,0
03994.21.12	11,0	6,8	4,1	2,0	14,0
02828.21.12	11,0	7,0	5,0	1,5	4,5
00752.21.11	13,8	7,5	5,8	2,5	7,0
03997.21.11	11,0	7,5	4,1	2,0	8,0
03998.21.11	11,0	7,5	4,1	2,0	14,0
03999.21.11	11,0	7,5	4,1	2,0	19,0

MATERIALE | MATERIAL: Nylon 66 - PVC - PE | PA 66 - PVC - PE**COLORI STANDARD | STANDARD COLOURS:** Naturale - Nero | Natural - Black**AUTOESTINGUENZA | UL FLAMMABILITY:** V2 - UL 94**UL FILE | UL FILE:** E 86244 (M)**CONFORMITÀ NORME | MIL standards:** MIL S 23190 E**OMOLOGAZIONE:** RI.NA n° 5/043/93

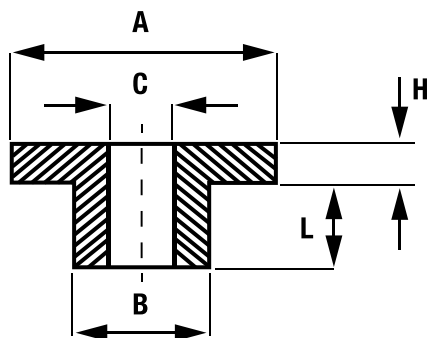
DETTAGLI | DETAILS



P/N	DIMENSIONI Sizes				
	A	B	C	H	L
00739.21.11	16,9	8,2	6,5	3,0	6,5
00740.21.10	19,7	9,8	8,2	2,5	8,0
00747.21.10	28,0	17,5	10,5	4,5	4,5
00748.21.20	29,5	27,5	25,0	1,0	6,0
02787.21.10	10,0	6,2	5,3	1,0	1,0
02788.21.10	10,0	6,2	5,3	1,0	2,0
02789.21.10	10,0	6,2	5,3	1,0	3,0
02790.21.10	10,0	6,2	5,3	1,0	4,0
02791.21.20	10,0	6,2	5,3	1,0	5,0
02792.21.20	10,0	6,2	5,3	1,0	6,0
02793.21.20	10,0	6,2	5,3	1,0	7,0
02795.21.20	10,0	6,2	5,3	1,0	9,0
02797.21.11	10,0	6,2	5,3	2,0	2,0
02798.21.11	10,0	6,2	5,3	2,0	3,0
02799.21.11	10,0	6,2	5,3	2,0	4,0
02800.21.11	10,0	6,2	5,3	2,0	5,0
02801.21.10	10,0	6,2	5,3	2,0	6,0

MATERIALE | MATERIAL: Nylon 66 - PE | PA 66 - PE**COLORI STANDARD** | STANDARD COLOURS: Naturale - Nero | Natural - Black**AUTOESTINGUENZA** | UL FLAMMABILITY: V2 - UL 94**UL FILE** | UL FILE: E 86244 (M)**CONFORMITÀ NORME** | MIL standards: MIL S 23190 E**OMOLOGAZIONE**: RI.NA n° 5/043/93

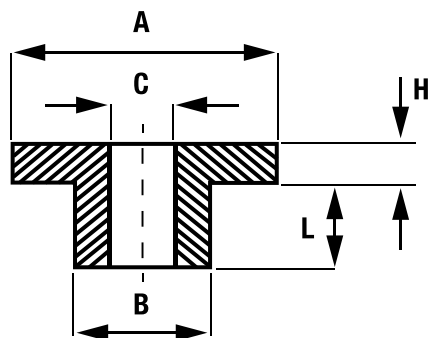
DETTAGLI | DETAILS



P/N	DIMENSIONI Sizes				
	A	B	C	H	L
02804.21.20	10,0	6,2	5,3	3,0	1,0
02805.21.10	10,0	6,2	5,3	3,0	2,0
02806.21.11	10,0	6,2	5,3	3,0	3,0
02807.21.11	10,0	6,2	5,3	3,0	4,0
02808.21.20	10,0	6,2	5,3	3,0	5,0
02810.21.20	10,0	6,2	5,3	3,0	7,0
02812.21.10	10,0	6,2	5,3	4,0	2,0
02816.21.20	10,0	6,2	5,3	4,0	6,0
02818.21.10	10,0	6,2	5,3	5,0	2,0
02820.21.20	10,0	6,2	5,3	5,0	4,0
02821.21.20	10,0	6,2	5,3	5,0	5,0
02840.21.11	20,0	9,8	6,3	1,0	1,0

MATERIALE | MATERIAL: Nylon 66 - PE | PA 66 - PE**COLORI STANDARD | STANDARD COLOURS:** Naturale - Nero | Natural - Black**AUTOESTINGUENZA | UL FLAMMABILITY:** V2 - UL 94**UL FILE | UL FILE:** E 86244 (M)**CONFORMITÀ NORME | MIL standards:** MIL S 23190 E**OMOLOGAZIONE:** RI.NA n° 5/043/93

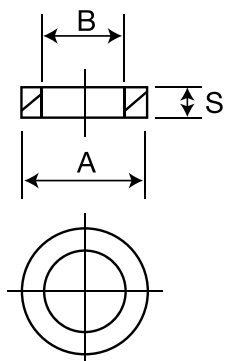
DETTAGLI | DETAILS



P/N	DIMENSIONI Sizes				
	A	B	C	H	L
02841.21.11	20,0	9,8	6,3	1,0	2,0
02843.21.11	20,0	9,8	6,3	1,0	3,0
02844.21.11	20,0	9,8	6,3	2,0	2,0
02846.21.11	20,0	9,8	6,3	1,0	4,0
02847.21.11	20,0	9,8	6,3	2,0	3,0
02848.21.10	20,0	9,8	6,3	3,0	2,0
02850.21.11	20,0	9,8	6,3	2,0	4,0
02851.21.10	20,0	9,8	6,3	3,0	3,0
02852.21.10	20,0	9,8	6,3	1,0	6,0
02853.21.10	20,0	9,8	6,3	2,0	5,0
02854.21.10	20,0	9,8	6,3	3,0	4,0
02855.21.10	20,0	9,8	6,3	1,0	7,0
02857.21.11	20,0	9,8	6,3	3,0	5,0
02861.21.11	20,0	9,8	6,3	1,0	9,0
02863.21.11	20,0	9,8	6,3	3,0	7,0
02864.21.11	20,0	9,8	6,3	1,0	10,0
02867.21.11	20,0	9,8	6,3	1,0	11,0
02869.21.11	20,0	9,8	6,3	3,0	9,0
03086.21.11	20,0	9,8	6,3	4,0	8,0

MATERIALE | MATERIAL: Nylon 66 - PVC | PA 66 - PVC**COLORI STANDARD** | STANDARD COLOURS: Naturale | Natural

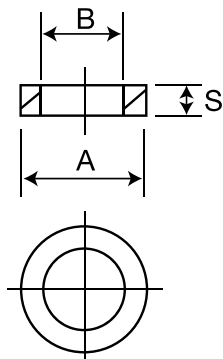
DETTAGLI | DETAILS



P/N	DIMENSIONI Sizes		
	A	B	S
06422.21.10	4,2	1,9	0,5
06423.21.10	4,5	2,0	0,8
06479.21.10	8,8	2,0	1,5
02238.21.51	10,0	2,0	2,0
02282.21.51	12,0	2,0	2,0
06424.21.10	4,5	2,1	0,8
06425.21.10	4,5	2,1	0,9
06426.21.10	4,5	2,1	1,2
06427.21.10	4,5	2,1	1,7
06430.21.10	5,0	2,1	1,0
06429.21.10	5,0	2,1	2,0
06419.21.10	3,7	2,2	1,0
06420.21.10	3,7	2,2	1,2
06435.21.10	6,0	2,3	0,8
06448.21.10	6,35	2,3	2,5
03105.21.10	4,5	2,4	0,5
03106.21.10	4,5	2,4	1,0
03107.21.10	4,5	2,4	2,0
03098.21.10	4,5	2,4	3,0
06421.21.10	4,0	2,5	0,5
06428.21.10	4,5	2,5	0,5

MATERIALE | MATERIAL: Nylon 66 - PVC | PA 66 - PVC**COLORI STANDARD** | STANDARD COLOURS: Naturale | Natural

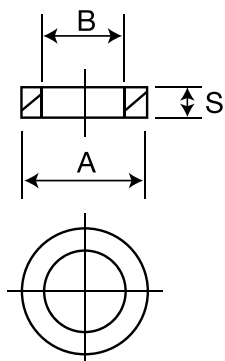
DETTAGLI | DETAILS



P/N	DIMENSIONI Sizes		
	A	B	S
06431.21.10	5,0	2,5	1,1
06436.21.10	6,0	2,5	0,5
06481.21.10	9,0	2,5	1,0
03111.21.10	5,0	2,7	0,5
06437.21.10	6,0	2,7	3,0
03112.21.10	5,0	2,7	1,0
03113.21.10	5,0	2,7	2,0
03095.21.10	5,0	2,7	3,0
03096.21.10	5,0	2,7	5,0
06438.21.10	6,0	2,9	2,35
06439.21.10	6,0	3,0	1,5
06449.21.10	6,35	3,0	1,27
06456.21.10	7,0	3,0	0,8
06455.21.10	7,0	3,0	1,0
02239.21.51	10,0	3,0	2,0
02283.21.51	12,0	3,0	2,0
06432.21.10	5,0	3,1	1,0
06440.21.10	6,0	3,1	0,5
06441.21.10	6,0	3,1	2,0
06442.21.10	6,0	3,1	3,4
06457.21.10	7,0	3,1	0,5

MATERIALE | MATERIAL: Nylon 66 | PA 66**COLORI STANDARD** | STANDARD COLOURS: Naturale | Natural

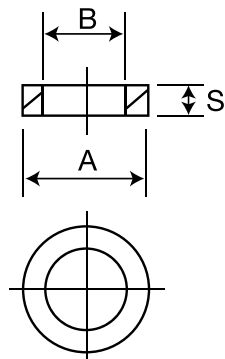
DETTAGLI | DETAILS



P/N	DIMENSIONI Sizes		
	A	B	S
06461.21.10	8,0	3,1	0,5
06462.21.10	8,0	3,1	0,8
06463.21.10	8,0	3,1	1,0
06464.21.10	8,0	3,1	1,5
06465.21.10	8,0	3,1	2,0
00596.21.10	7,0	3,1	4,0
00597.21.10	7,0	3,1	5,0
06433.21.10	5,0	3,2	0,5
06443.21.10	6,0	3,2	1,0
06297.21.10	5,0	3,2	2,0
06298.21.10	5,0	3,2	2,5
06299.21.10	5,0	3,2	3,0
06300.21.10	5,0	3,2	3,3
06301.21.10	5,0	3,2	3,5
06302.21.10	5,0	3,2	4,0
06303.21.10	5,0	3,2	4,5
00593.21.10	7,0	3,3	1,0
00594.21.10	7,0	3,3	2,0
00595.21.10	7,0	3,3	3,0
06460.21.10	7,5	3,5	0,5

MATERIALE | MATERIAL: Nylon 66 - PVC | PA 66 - PVC**COLORI STANDARD** | STANDARD COLOURS: Naturale | Natural

DETTAGLI | DETAILS

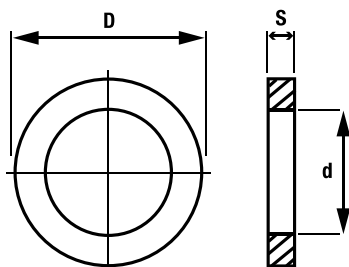


P/N	DIMENSIONI Sizes		
	A	B	S
06491.21.10	11,5	3,5	4,0
00639.21.20	14,0	3,5	1,0
00640.21.10	14,0	3,5	2,0
00641.21.10	14,0	3,5	3,0
00642.21.10	14,0	3,5	4,0
00643.21.10	14,0	3,5	5,0
06466.21.10	8,0	3,6	2,5
06467.21.10	8,0	3,6	0,8
04075.21.10	12,0	3,6	1,5
06459.21.10	7,1	3,7	0,5
04076.21.10	12,0	3,7	1,5
06434.21.10	5,6	3,73	0,3
06445.21.10	6,0	3,8	1,0
06446.21.10	6,0	3,8	1,5
06451.21.10	6,5	3,8	0,5
06452.21.10	6,5	4,0	1,6
06453.21.10	6,5	4,0	2,5
02240.21.51	10,0	4,0	2,0
02284.21.51	12,0	4,0	2,0
02247.21.51	10,0	4,0	2,5

RONDELLE IN PVC | PVC Washers

MATERIALE | MATERIAL: PVC | PVC

COLORI STANDARD | STANDARD COLOURS: Nero | Black

DETTAGLI | DETAILS


Codice	DIMENSIONI Sizes		
	D	d	S
20000.53.51	7,5	3,5	2,0
20010.53.51	10,0	2,0	2,0
20011.53.51	10,0	3,0	2,0
20012.53.51	10,0	4,0	2,0
20013.53.51	10,0	5,0	2,0
20014.53.51	10,0	6,0	2,0
20015.53.51	10,0	7,0	2,0
20016.53.51	10,0	8,0	2,0
20030.53.51	10,0	4,0	2,5
20040.53.51	12,0	2,0	2,0
20041.53.51	12,0	3,0	2,0
20042.53.51	12,0	4,0	2,0
20043.53.51	12,0	5,0	2,0
20044.53.51	12,0	6,0	2,0
20045.53.51	12,0	7,0	2,0
20046.53.51	12,0	8,0	2,0
20068.53.51	14,0	6,0	1,5
20069.53.51	14,0	6,5	1,5
20070.53.51	14,0	6,5	1,0
20071.53.51	14,0	6,5	2,0
20072.53.51	14,0	6,5	3,0
20073.53.51	14,0	7,0	2,0
20080.53.51	14,0	3,5	1,0
20081.53.51	14,0	3,5	2,0
20082.53.51	14,0	3,5	3,0
20083.53.51	14,0	5,0	1,5
20090.53.51	14,0	5,0	1,0

Codice	DIMENSIONI Sizes		
	D	d	S
20091.53.51	14,0	5,0	2,0
20092.53.51	14,0	5,0	3,0
20095.53.51	14,0	8,0	2,0
20100.53.51	15,5	7,0	1,0
20101.53.51	15,5	7,0	2,0
20102.53.51	15,5	7,0	3,0
20103.53.51	15,5	7,0	4,0
20104.53.51	15,5	7,0	5,0
20110.53.51	16,0	5,0	3,0
20120.53.51	17,0	6,5	1,0
20121.53.51	17,0	6,5	2,0
20122.53.51	17,0	6,5	3,0
20130.53.51	17,0	8,5	1,0
20131.53.51	17,0	8,5	2,0
20132.53.51	17,0	8,5	3,0
20133.53.51	17,0	8,5	1,5
20140.53.51	17,0	10,5	1,0
20141.53.51	17,0	10,5	2,0
20142.53.51	17,0	10,5	3,0
20150.53.51	21,0	10,0	1,0
20151.53.51	21,0	11,0	1,0
20152.53.51	21,0	12,0	1,0
20153.53.51	21,0	13,0	1,0
20154.53.51	21,0	14,0	1,0
20155.53.51	21,0	15,0	1,0
20156.53.51	21,0	16,0	1,0
20163.53.51	39,0	31,0	1,2